



OPEN

MDMA-assisted therapy for severe PTSD: a randomized, double-blind, placebo-controlled phase 3 study

Jennifer M. Mitchell^{1,2}✉, Michael Bogenschutz³, Alia Lilienstein⁴, Charlotte Harrison⁵, Sarah Kleiman⁶, Kelly Parker-Guilbert⁷, Marcela Ot'alora G.^{8,9}, Wael Garas⁸, Casey Paleos¹⁰, Ingmar Gorman¹¹, Christopher Nicholas¹², Michael Mithoefer^{5,9,13}, Shannon Carlin^{5,9}, Bruce Poulter^{8,9}, Ann Mithoefer⁹, Sylvestre Quevedo^{2,14}, Gregory Wells¹⁴, Sukhpreet S. Klaire¹⁵, Bessel van der Kolk¹⁶, Keren Tzarfaty⁹, Revital Amiaz¹⁷, Ray Worthy¹⁸, Scott Shannon¹⁹, Joshua D. Woolley², Cole Marta²⁰, Yevgeniy Gelfand²¹, Emma Hapke²², Simon Amar²³, Yair Wallach²⁴, Randall Brown¹¹, Scott Hamilton²⁵, Julie B. Wang⁵, Allison Coker^{1,5}, Rebecca Matthews⁵, Alberdina de Boer⁵, Berra Yazar-Klosinski⁴, Amy Emerson⁵ and Rick Doblin⁴

Post-traumatic stress disorder (PTSD) presents a major public health problem for which currently available treatments are modestly effective. We report the findings of a randomized, double-blind, placebo-controlled, multi-site phase 3 clinical trial (NCT03537014) to test the efficacy and safety of 3,4-methylenedioxymethamphetamine (MDMA)-assisted therapy for the treatment of patients with severe PTSD, including those with common comorbidities such as dissociation, depression, a history of alcohol and substance use disorders, and childhood trauma. After psychiatric medication washout, participants ($n = 90$) were randomized 1:1 to receive manualized therapy with MDMA or with placebo, combined with three preparatory and nine integrative therapy sessions. PTSD symptoms, measured with the Clinician-Administered PTSD Scale for DSM-5 (CAPS-5, the primary endpoint), and functional impairment, measured with the Sheehan Disability Scale (SDS, the secondary endpoint) were assessed at baseline and at 2 months after the last experimental session. Adverse events and suicidality were tracked throughout the study. MDMA was found to induce significant and robust attenuation in CAPS-5 score compared with placebo ($P < 0.0001$, $d = 0.91$) and to significantly decrease the SDS total score ($P = 0.0116$, $d = 0.43$). The mean change in CAPS-5 scores in participants completing treatment was -24.4 (s.d. 11.6) in the MDMA group and -13.9 (s.d. 11.5) in the placebo group. MDMA did not induce adverse events of abuse potential, suicidality or QT prolongation. These data indicate that, compared with manualized therapy with inactive placebo, MDMA-assisted therapy is highly efficacious in individuals with severe PTSD, and treatment is safe and well-tolerated, even in those with comorbidities. We conclude that MDMA-assisted therapy represents a potential breakthrough treatment that merits expedited clinical evaluation.

PTSD is a common and debilitating condition with immeasurable social and economic costs that affects the lives of hundreds of millions of people annually. There are a number of environmental and biological risk factors that contribute to the development and maintenance of PTSD¹, and poor PTSD treatment outcomes are associated with several comorbid conditions that include childhood trauma², alcohol and substance use disorders³, depression⁴, suicidal ideation⁵ and dissociation⁶.

It is therefore imperative to identify a therapeutic that is beneficial in those individuals with the comorbidities that typically confer treatment resistance.

The selective serotonin reuptake inhibitors (SSRIs) sertraline and paroxetine are Food and Drug Administration (FDA)-approved first-line therapeutics for the treatment of PTSD. However, an estimated 40–60% of patients do not respond to these compounds⁷. Likewise, although evidenced-based trauma-focused

¹Department of Neurology, University of California San Francisco, San Francisco, CA, USA. ²Department of Psychiatry and Behavioral Sciences, University of California San Francisco, San Francisco, CA, USA. ³Department of Psychiatry, New York University Grossman School of Medicine, New York, NY, USA.

⁴Multidisciplinary Association for Psychedelic Studies (MAPS), San Jose, CA, USA. ⁵MAPS Public Benefit Corporation (MAPS PBC), San Jose, CA, USA.

⁶Kleiman Consulting and Psychological Services, Sayreville, NJ, USA. ⁷KPG Psychological Services LLC, Brunswick, ME, USA. ⁸Aguazul-Bluewater Inc., Boulder, CO, USA. ⁹MDMA Therapy Training Program, MAPS Public Benefit Corporation, San Jose, CA, USA. ¹⁰Nautilus Sanctuary, New York, NY, USA.

¹¹Fluence, Woodstock, NY, USA. ¹²Department of Family Medicine and Community Health, University of Wisconsin School of Medicine and Public Health, Madison, WI, USA. ¹³Medical University of South Carolina, Charleston, SC, USA. ¹⁴San Francisco Insight and Integration Center, San Francisco, CA, USA.

¹⁵British Columbia Centre on Substance Use, Vancouver, British Columbia, Canada. ¹⁶Boston University School of Medicine, Boston, MA, USA. ¹⁷Chaim Sheba Medical Center, Tel HaShomer, Israel. ¹⁸Ray Worthy Psychiatry LLC, New Orleans, LA, USA. ¹⁹Wholeness Center, Fort Collins, CO, USA. ²⁰New School Research LLC, North Hollywood, CA, USA. ²¹Zen Therapeutic Solutions, Mt Pleasant, SC, USA. ²²University of Toronto, Toronto, Ontario, Canada.

²³Dr Simon Amar Inc., Montreal, Quebec, Canada. ²⁴Be'er Ya'akov Ness Ziona Mental Health Center, Be'er Ya'akov, Israel. ²⁵Stanford School of Medicine, Stanford, CA, USA.

✉e-mail: jennifer.mitchell@ucsf.edu

psychotherapies such as prolonged exposure and cognitive behavioral therapy are considered to be the gold standard treatments for PTSD⁸, many participants fail to respond or continue to have significant symptoms, and dropout rates are high^{9,10}. Novel cost-effective therapeutics are therefore desperately needed¹¹.

The substituted amphetamine 3,4-methylenedioxymethamphetamine (MDMA) induces serotonin release by binding primarily to presynaptic serotonin transporters¹². MDMA has been shown to enhance fear memory extinction, modulate fear memory reconsolidation (possibly through an oxytocin-dependent mechanism), and bolster social behavior in animal models^{13,14}. Pooled analysis of six phase 2 trials of MDMA-assisted therapy for PTSD have now shown promising safety and efficacy findings¹⁵.

Here, we assess the efficacy and safety of MDMA-assisted therapy in individuals with severe PTSD. Participants were given three doses of MDMA or placebo in a controlled clinical environment and in the presence of a trained therapy team. Primary and secondary outcome measures (CAPS-5 and SDS, respectively) were assessed by a centralized pool of blinded, independent diagnostic assessors. MDMA-assisted therapy for PTSD was granted an FDA Breakthrough Therapy designation, and the protocol and statistical analysis plan (SAP) were developed in conjunction with the FDA¹⁶.

Results

Demographics. Participants were recruited from 7 November 2018 to 26 May 2020, with the last participant visit conducted on 21 August 2020. A total of 345 participants were assessed for eligibility, 131 were enrolled, 91 were confirmed for randomization (United States, $n=77$; Canada, $n=9$; Israel, $n=5$), and 46 were randomized to MDMA and 44 to placebo (Fig. 1).

Study arms were not significantly different in terms of race, ethnicity, sex, age, dissociative subtype, disability or CAPS-5 score (Table 1). The mean duration of PTSD diagnosis was 14.8 (s.d. 11.6) years and 13.2 (s.d. 11.4) years in the MDMA and placebo groups, respectively. Of note, six participants in the MDMA group and 13 participants in the placebo group had the dissociative subtype according to CAPS-5 score.

Efficacy. MDMA significantly attenuated PTSD symptomology, as shown by the change in CAPS-5 total severity score from baseline to 18 weeks after baseline. Mixed model repeated measure (MMRM) analysis of the de jure estimand (that is, the effects of the drug if taken as directed) showed a significant difference in treatment arms ($n=89$ (MDMA $n=46$), $P<0.0001$, between-group difference = 11.9, 95% confidence interval (CI) = 6.3–17.4, d.f. = 71) (Fig. 2a). MMRM sensitivity analysis of the de facto estimand (that is, the effects of the drug if taken as assigned, regardless of adherence) showed a significant difference in treatment arms ($n=90$, $P<0.0001$, d.f. = 72).

The mean change in CAPS-5 scores from baseline to 18 weeks after baseline in the completers (per protocol set) was -24.4 (s.d. 11.6) ($n=42$) in the MDMA-assisted therapy group compared with -13.9 (s.d. 11.5) ($n=37$) in the placebo with therapy group.

The effect size of the MDMA-assisted therapy treatment compared with placebo with therapy was $d=0.91$ (95% CI = 0.44–1.37, pooled s.d. = 11.55) in the de jure estimand and $d=0.97$ (95% CI = 0.51–1.42) in the de facto estimand. When the within-group treatment effect (which included the effect of the supportive therapy that was administered in both arms) was compared between the MDMA and placebo groups, the effect size was 2.1 (95% CI = -5.6 to 1.4) in the MDMA group and 1.2 (95% CI = -4.9 to 2.5) in the placebo group.

Over the same period, MDMA significantly reduced clinician-rated functional impairment as assessed with the SDS. MMRM analysis of the de jure estimand showed a significant difference in

treatment arms ($n=89$ (MDMA $n=46$), $P=0.0116$, d.f. = 71, effect size = 0.43, 95% CI = -0.01 to 0.88, pooled s.d. = 2.53) (Fig. 2b). The mean change in SDS scores from baseline to 18 weeks after baseline in the completers was -3.1 (s.d. 2.6) ($n=42$) in the MDMA-assisted therapy group and -2.0 (s.d. 2.4) ($n=37$) in the placebo with therapy group.

MDMA was equally effective in participants with comorbidities that are often associated with treatment resistance. Participants with the dissociative subtype of PTSD who received MDMA-assisted therapy had significant symptom reduction on the CAPS-5 (mean MDMA $\Delta=-30.8$ (s.d. 9.0), mean placebo $\Delta=-12.8$ (s.d. 12.8)), and this was similar to that in their counterparts with non-dissociative PTSD (mean MDMA $\Delta=-23.6$ (s.d. 11.7), mean placebo $\Delta=-14.3$ (s.d. 11.2)). The benefit of MDMA therapy was not modulated by history of alcohol use disorder, history of substance use disorder, overnight stay or severe childhood trauma. Results were consistent across all 15 study sites with no effect by study site ($P=0.1003$). In MMRM analysis there was no obvious impact of SSRI history on effectiveness of MDMA (Supplementary Table 2).

MDMA therapy was effective in an exploratory endpoint analysis of the reduction of depression symptoms (using the Beck Depression Inventory II (BDI-II)) from baseline to study termination of the de jure estimand (mean MDMA $\Delta=-19.7$ (s.d. 14.0), $n=42$; mean placebo $\Delta=-10.8$ (s.d. 11.3), $n=39$; $t=-3.11$, $P=0.0026$, d.f. = 79, effect size = 0.67, 95% CI = 0.22–1.12) (Fig. 2c).

Clinically significant improvement (a decrease of ≥ 10 points on the CAPS-5), loss of diagnosis (specific diagnostic measure on the CAPS-5), and remission (loss of diagnosis and a total CAPS-5 score ≤ 11) were each tracked. At the primary study endpoint (18 weeks after baseline), 28 of 42 (67%) of the participants in the MDMA group no longer met the diagnostic criteria for PTSD, compared with 12 of 37 (32%) of those in the placebo group after three sessions. Additionally, 14 of 42 participants in the MDMA group (33%) and 2 of 37 participants in the placebo group (5%) met the criteria for remission after three sessions (Fig. 3).

Safety. Treatment-emergent adverse events (TEAEs, adverse events that occurred during the treatment period from the first experimental session to the last integration session) that were more prevalent in the MDMA study arm were typically transient, mild to moderate in severity, and included muscle tightness, decreased appetite, nausea, hyperhidrosis and feeling cold (Supplementary Table 3). Importantly, no increase in adverse events related to suicidality was observed in the MDMA group. A transient increase in vital signs (systolic and diastolic blood pressure and heart rate) was observed in the MDMA group (Supplementary Table 4). Two participants in the MDMA group had a transient increase in body temperature to 38.1 °C: one had an increase after the second MDMA session, and one had an increase after the second and third MDMA sessions.

Two participants, both randomized to the placebo group, reported three serious adverse events (SAEs) during the trial. One participant in the placebo group reported two SAEs of suicidal behavior during the trial, and another participant in the placebo group reported one SAE of suicidal ideation that led to self-hospitalization. Five participants in the placebo group and three participants in the MDMA group reported adverse events of special interest (AESIs) of suicidal ideation, suicidal behavior or self-harm in the context of suicidal ideation. One participant in the placebo group reported two cardiovascular AESIs in which underlying cardiac etiology could not be ruled out (Table 2). One participant randomized to the MDMA group chose to discontinue participation due to being triggered by the CAPS-5 assessments and to an adverse event of depressed mood following an experimental session; this participant met the criterion as a non-responder, which was defined as having a less than

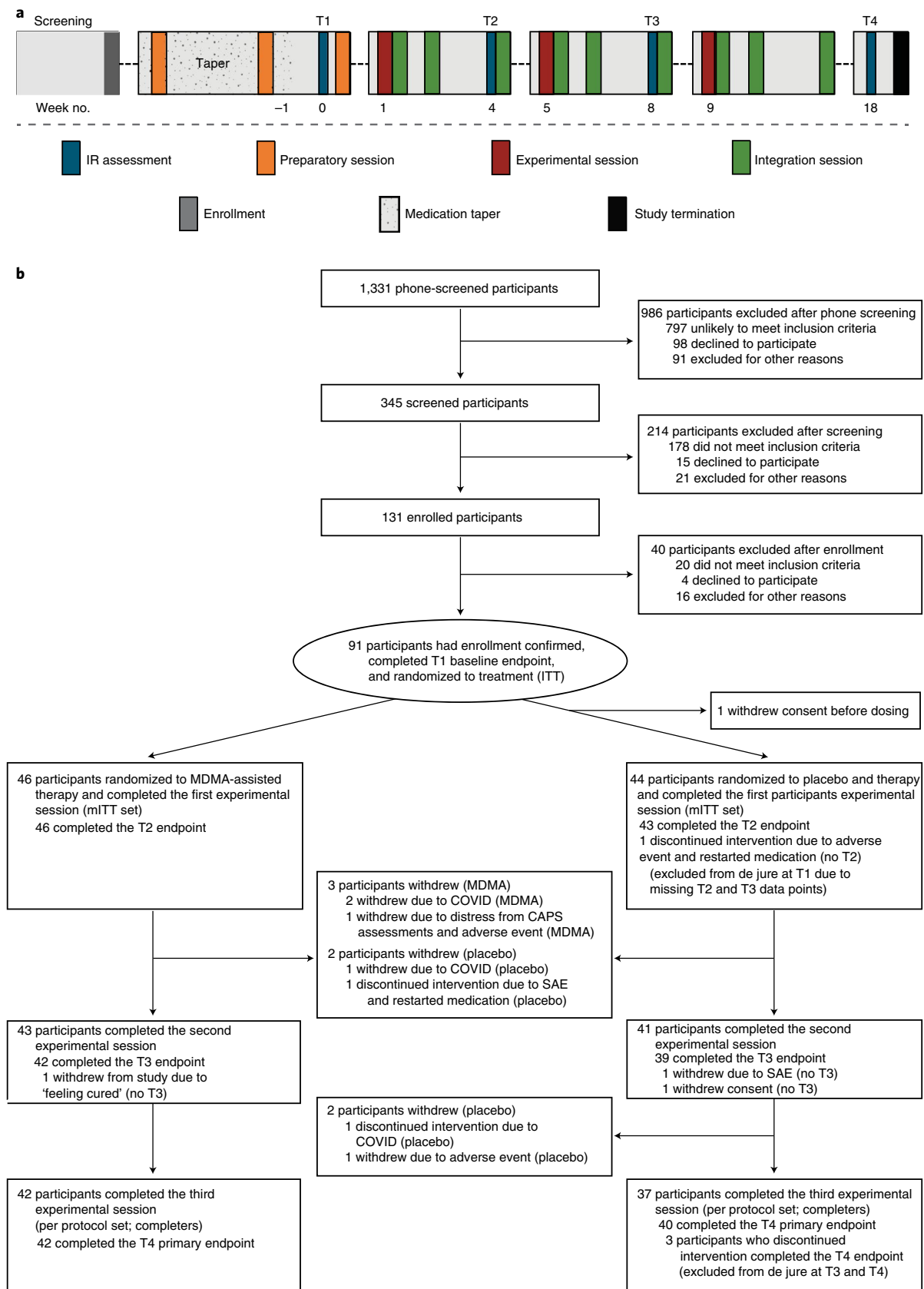


Fig. 1 | Procedure timeline and study flow diagram. a, Procedure timeline. Following the screening procedures and medication taper, participants attended a total of three preparatory sessions, three experimental sessions, nine integration sessions and four endpoint assessments (T1–4) over 18 weeks, concluding with a final study-termination visit. IR, independent rater; T, timepoint of endpoint assessment; T1, baseline; T2, after the first experimental session; T3, after the second experimental session; T4, 18 weeks after baseline. **b**, CONSORT diagram indicating participant numbers and disposition through the course of the trial.

Table 1 | Demographics and baseline characteristics

	MDMA-assisted therapy (n = 46)	Placebo with therapy (n = 44)	Total (n = 90)
Age (years), mean (s.d.)	43.5 (12.9)	38.2 (10.4)	41.0 (11.9)
Sex assigned at birth, n (%)			
Male	19 (41.3)	12 (27.3)	31 (34.4)
Female ^a	27 (58.7)	32 (72.7)	59 (65.6)
Ethnicity, n (%)			
Hispanic or Latino	5 (10.9)	3 (6.8)	8 (8.9)
Not Hispanic or Latino	41 (89.1)	40 (90.9)	81 (90.0)
Race, n (%)			
American Indian or native Alaskan	3 (6.5)	0 (0.0)	3 (3.3)
Asian	2 (4.3)	5 (11.4)	7 (7.8)
Black or African American	0 (0.0)	2 (4.5)	2 (2.2)
Native Hawaiian or other Pacific Islander	0 (0.0)	0 (0.0)	0 (0.0)
White	39 (84.8)	30 (68.2)	69 (76.7)
Multiple	2 (4.3)	6 (13.6)	8 (8.9)
BMI (kg m ⁻²), mean (s.d.)	26.0 (4.8)	24.8 (4.2)	25.4 (4.5)
Duration of PTSD (years), mean (s.d.)	14.8 (11.6)	13.2 (11.4)	14.1 (11.5)
Dissociative subtype of PTSD, n (%)	6 (13.0)	13 (29.5)	19 (21.1)
Comorbid major depression, n (%)	42 (91.3)	40 (90.9)	82 (91.1)
Veteran	10 (21.7)	6 (13.6)	16 (17.8)
Trauma history, n (%)			
Developmental trauma	40 (87.0)	36 (81.8)	76 (84.4)
Combat exposure	6 (13.0)	5 (11.4)	11 (12.2)
Multiple trauma	41 (89.1)	38 (86.4)	79 (87.8)
Pre-study PTSD medications, n (%) ^b			
Sertraline	8 (17.4)	9 (20.5)	17 (18.9)
Paroxetine	3 (6.5)	3 (6.8)	6 (6.7)
Pre-study therapy, n (%)			
CBT	12 (26.1)	22 (50.0)	34 (37.8)
EMDR	17 (37.0)	13 (29.5)	30 (33.3)
Group therapy	19 (41.3)	14 (31.8)	33 (36.7)
Prolonged exposure therapy	1 (2.2)	0 (0)	1 (1.1)
Psychodynamic	11 (23.9)	10 (22.7)	21 (23.3)
Other	41 (89.1)	38 (86.4)	79 (87.8)
None	1 (2.2)	1 (2.3)	2 (2.2)
Baseline CAPS-5 total score, mean (s.d.)	44.0 (6.01)	44.2 (6.15)	44.1 (6.04)
Baseline SDS modified score, mean (s.d.)	6.8 (2.07)	7.4 (1.63)	7.1 (1.9)
Lifetime C-SSRS, n (%) ^c			
Positive lifetime suicidal ideation	42 (91.3)	41 (93.2)	83 (92.2)
Serious lifetime suicidal ideation	20 (43.5)	17 (38.6)	37 (41.1)
Positive lifetime suicidal behavior	16 (34.8)	13 (29.5)	29 (32.2)
Baseline BDI-II total score, mean (s.d.)	30.5 (13.1)	34.9 (12.6)	32.7 (13.0)
AUDIT, mean (s.d.)	4.1 (4.2)	2.8 (3.2)	3.5 (3.8)
DUDIT, mean (s.d.)	2.7 (4.3)	3.5 (4.5)	3.1 (4.4)
ACE Questionnaire score, mean (s.d.)	5.0 (2.7)	5.0 (2.9)	5.0 (2.8)
Prior report of MDMA use, n (%)			
Lifetime reported use	18 (39.1)	11 (25.0)	29 (32.2)
Reported use in the past 10 years	9 (19.6)	10 (22.7)	19 (21.1)

BMI, body mass index; CBT, cognitive behavioral therapy; EMDR, eye movement desensitization and reprocessing therapy. ^aTwo participants included in the assigned female at birth MDMA group identified their gender as non-binary. ^bMedications were tapered down and washed out prior to baseline assessments and the first experimental session, in accordance with the protocol. ^cLifetime accounts for all suicidal ideation and behavior prior to the study. Serious ideation is defined as a score of 4 or 5 in the suicidal ideation category.

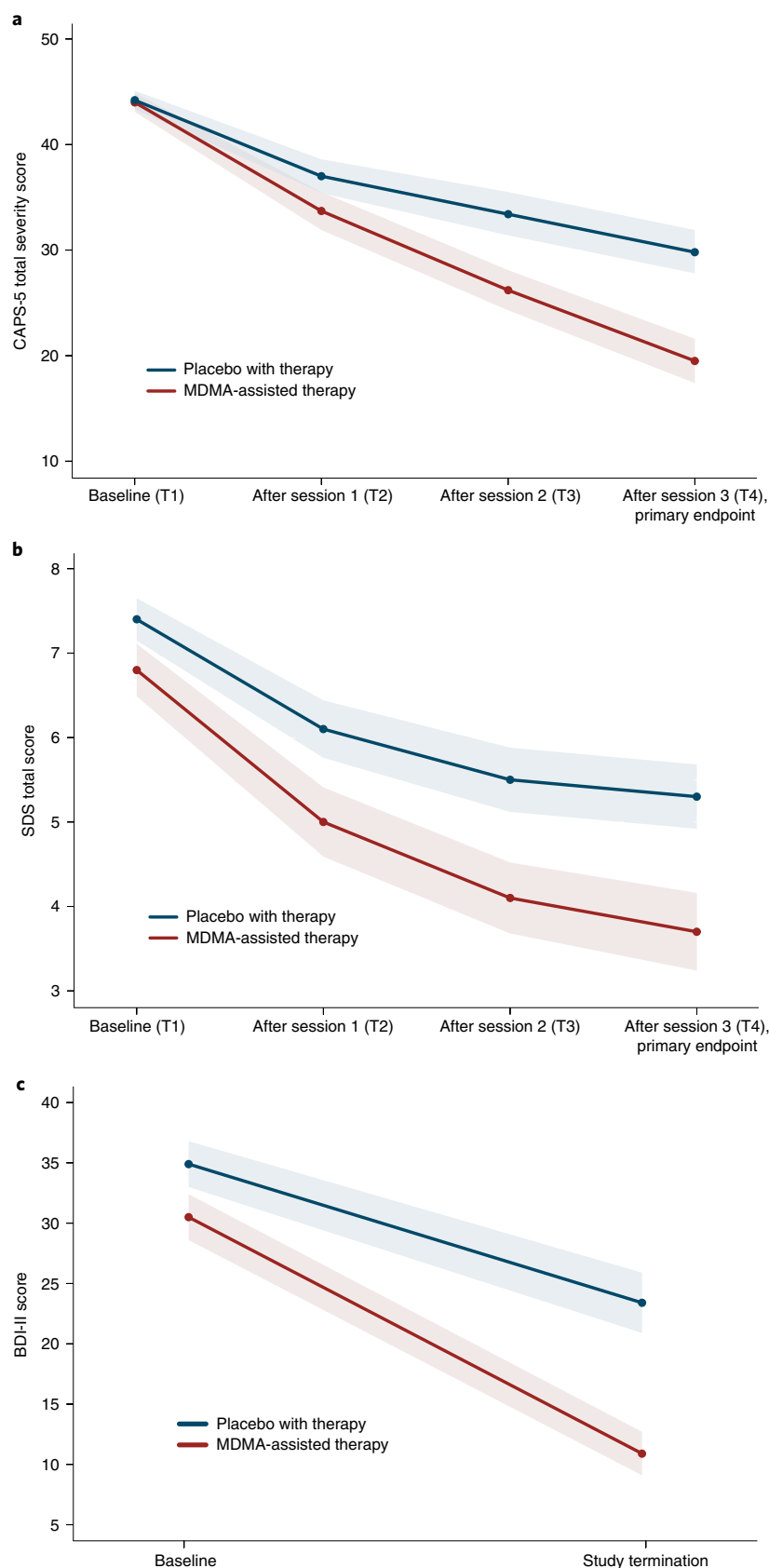


Fig. 2 | Measures of MDMA efficacy in the MDMA-assisted therapy group and the placebo group. a, Change in CAPS-5 total severity score from T1 to T4 ($P < 0.0001$, $d = 0.91$, $n = 89$ (MDMA $n = 46$)), as a measure of the primary outcome. Primary analysis was completed using least square means from an MMRM model. **b**, Change in SDS total score from T1 to T4 ($P = 0.0116$, $d = 0.43$, $n = 89$ (MDMA $n = 46$)), as a measure of the secondary outcome. Primary analysis was completed using least square means from an MMRM model. **c**, Change in BDI-II score from T1 to study termination ($t = -3.11$, $P = 0.0026$, $n = 81$ (MDMA $n = 42$)), as a measure of the exploratory outcome. Data are presented as mean and s.e.m.

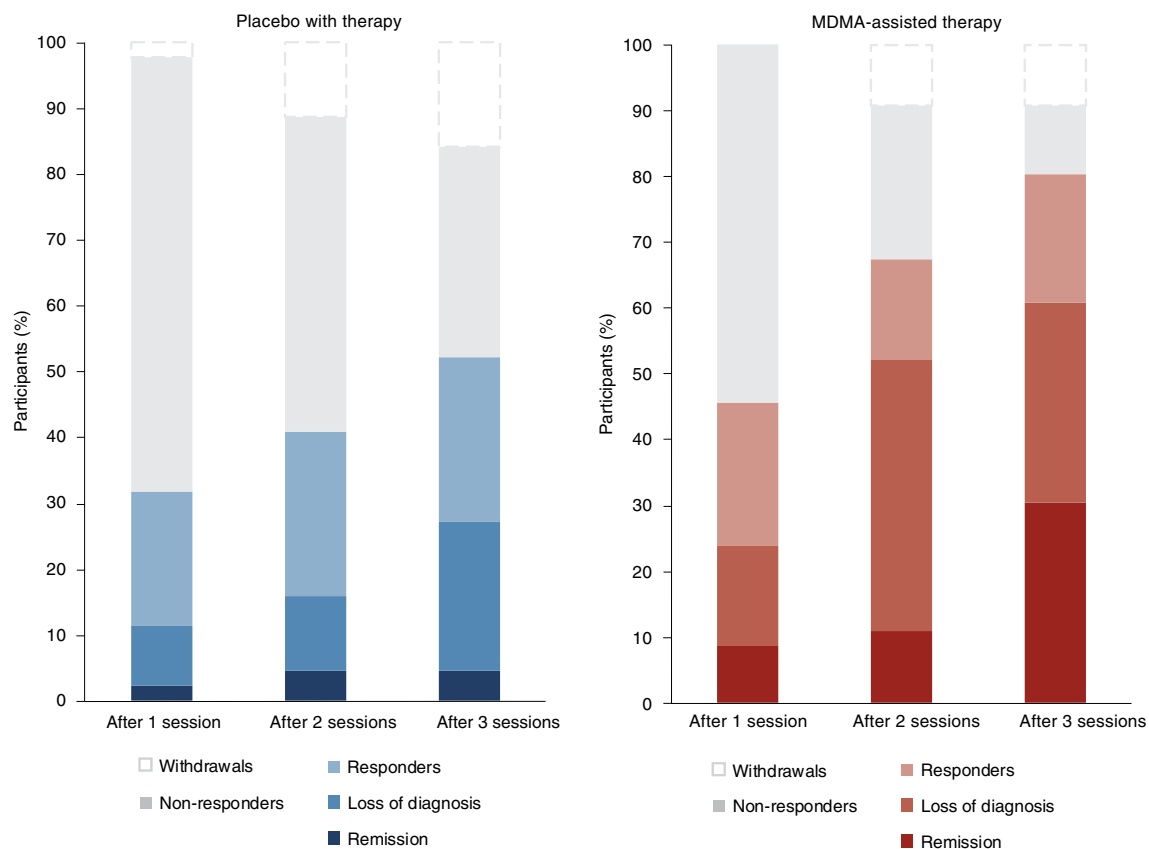


Fig. 3 | Treatment response and remission for MDMA and placebo groups as a percentage of total participants randomized to each arm (MDMA, $n = 46$; placebo, $n = 44$). Responders (clinically significant improvement, defined as a ≥ 10 -point decrease on CAPS-5), loss of diagnosis (specific diagnostic measure on CAPS-5), and remission (loss of diagnosis and a total CAPS-5 score of ≤ 11) were tracked in both groups. Non-response is defined as a < 10 -point decrease on CAPS-5. Withdrawal is defined as a post-randomization early termination.

Table 2 | Participants with treatment-emergent SAEs and AESIs

	MDMA ($n = 46$), n (%)	Placebo ($n = 44$), n (%)
SAEs	–	2 (4.5)
Suicide attempts	–	1 (2.3)
Suicidal ideation resulting in self-hospitalization	–	1 (2.3)
AESIs		
Suicidality (total)	3 (6.5)	5 (11.4)
Suicidal ideation	2 (4.3)	3 (6.8)
Intentional self-harm in the context of suicidal ideation	1 (2.2)	–
Suicidal behavior (suicide attempts and preparatory acts) and self-harm	–	1 (2.3)
Suicidal behavior (preparatory acts), self-harm and suicidal ideation	–	1 (2.3)
Cardiac events that could indicate QT prolongation (total)	–	1 (2.3)
Irregular heartbeats and palpitations	–	1 (2.3)
Abuse potential for MDMA (total)	–	–

The number of participants experiencing one or more SAEs or AESIs relating to suicidality, cardiovascular symptoms that could indicate QT prolongation, and abuse potential following the first experimental session.

10-point decrease in CAPS-5 score. MDMA sessions were not otherwise followed by a lowering of mood.

Suicidality was tracked throughout the study using the Columbia Suicide Severity Rating Scale (C-SSRS) at each study visit. More than 90% of participants reported suicidal ideation in their lifetime,

and 17 of 46 participants (37%) in the MDMA group and 14 of 44 participants (32%) in the placebo group reported suicidal ideation at baseline. Although the number of participants who reported suicidal ideation varied throughout the visits, prevalence never exceeded baseline and was not exacerbated in the MDMA group.

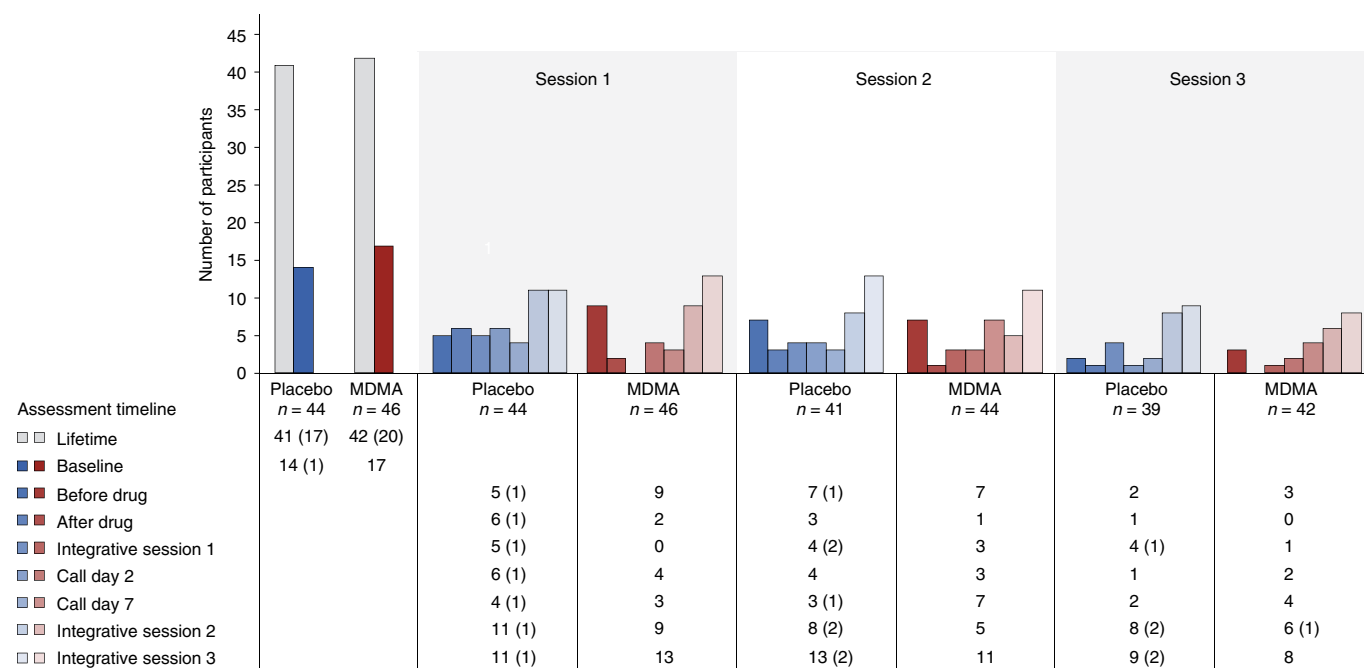


Fig. 4 | Number of participants reporting the presence of suicidal ideation as measured with the C-SSRS at each visit and separated by treatment group. C-SSRS ideation scores range from 0 (no ideation) to 5. A C-SSRS ideation score of 4 or 5 is termed 'serious ideation'. The number of participants endorsing any positive ideation (>0) is shown by the colored bars and noted in the table below the graph. The number of participants endorsing serious ideation is given in parentheses in the table.

Serious suicidal ideation (a score of 4 or 5 on the C-SSRS) was minimal during the study and occurred almost entirely in the placebo arm (Fig. 4).

Discussion

Here, we demonstrate that three doses of MDMA given in conjunction with manualized therapy over the course of 18 weeks results in a significant and robust attenuation of PTSD symptoms and functional impairment as assessed using the CAPS-5 and SDS, respectively. MDMA also significantly mitigated depressive symptoms as assessed using the BDI-II. Of note, MDMA did not increase the occurrence of suicidality during the study.

These data illustrate the potential benefit of MDMA-assisted therapy for PTSD over the FDA-approved first-line pharmacotherapies sertraline and paroxetine, which have both exhibited smaller effect sizes in pivotal studies¹⁶. Previous comparison of change in CAPS score between sertraline and placebo showed effect sizes of 0.31 and 0.37 (ref. ¹⁶). Similarly, comparison of change in CAPS score between paroxetine and placebo showed effect sizes of 0.56, 0.45 and 0.09 (ref. ¹⁶). By contrast, the effect size of 0.91 demonstrated in this study between MDMA-assisted therapy and placebo with therapy was larger than that for any other previously identified PTSD pharmacotherapy^{16–18}. To directly assess superiority, a head-to-head comparison of MDMA-assisted therapy with SSRIs for PTSD would be needed. Although the present study tested the effects of MDMA using a model in which both treatment groups received supportive therapy, participants who received MDMA and supportive therapy ($d=2.1$) had greater improvement in PTSD change scores compared with those who received placebo with supportive therapy ($d=1.2$), suggesting that MDMA enhanced the effects of supportive therapy. In clinical practice, both MDMA and supportive therapy will be components of this PTSD treatment.

Previous research on MDMA for PTSD has suggested that those with a recent history of SSRI treatment may not respond as robustly to MDMA¹⁸. Given that 65.5% of participants in the current trial

have a lifetime history of SSRI use, it is difficult to separate the ramifications of long-term SSRI treatment from the effects of treatment resistance. However, there was no obvious effect of previous SSRI use on therapeutic efficacy in this trial. Similarly, although years of PTSD diagnosis or age of onset may affect treatment efficacy, no obvious relationship was seen here between duration or onset of PTSD diagnosis and treatment efficacy.

Serotonin and the serotonin transporter are of particular importance in the generation, consolidation, retrieval and reconsolidation of fear memories^{19,20}. Reduced serotonin transporter levels (which result in greater amounts of extracellular serotonin) have been shown to predict propensity to develop PTSD²¹, increase fear and anxiety-related behaviors²², and induce greater amygdalar blood oxygenation level-dependent (BOLD) activity in response to fearful images²³. There is extensive serotonergic innervation of the amygdala, and amygdalar serotonin levels have been shown to increase following exposure to stressful and fear-inducing stimuli²⁴. MDMA enhances the extinction of fear memories in mice through increased expression of brain-derived neurotrophic factor in the amygdala, and human neuroimaging studies have demonstrated that MDMA is associated with attenuated amygdalar BOLD activity during presentation of negative emotional stimuli²⁵. Together these data suggest that MDMA may exert its therapeutic effects through a well-conserved mechanism of amygdalar serotonergic function that regulates fear-based behaviors and contributes to the maintenance of PTSD. Perhaps by reopening an oxytocin-dependent critical period of neuroplasticity that typically closes after adolescence¹⁵, MDMA may facilitate the processing and release of particularly intractable, potentially developmental, fear-related memories.

It is intriguing to speculate that the pharmacological properties of MDMA, when combined with therapy, may produce a 'window of tolerance', in which participants are able to revisit and process traumatic content without becoming overwhelmed or encumbered by hyperarousal and dissociative symptoms²⁶. MDMA-assisted

therapy may facilitate recall of negative or threatening memories with greater self-compassion²⁷ and less PTSD-related shame and anger²⁸. Additionally, the acute prosocial and interpersonal effects of MDMA^{25,29} may support the quality of the therapeutic alliance, a potentially important factor relating to PTSD treatment adherence³⁰ and outcome³¹. Indeed, clinicians have suggested that “MDMA may catalyze therapeutic processing by allowing patients to stay emotionally engaged while revisiting traumatic experiences without becoming overwhelmed”³².

Given that PTSD is a strong predictor of disability in both veteran and community populations³³, it is promising to note that the robust reduction in PTSD and depressive symptoms identified here is complemented by a significant improvement in SDS score (for example, work and/or school, social and family functioning). Approximately 4.7 million US veterans report a service-related disability³⁴, costing the US government approximately \$73 billion per year³⁵. Identification of a PTSD treatment that could improve social and family functioning and ameliorate impairment across a broad range of environmental contexts could provide major medical cost savings, in addition to improving the quality of life for veterans and others affected by this disorder.

PTSD is a particularly persistent and incapacitating condition when expressed in conjunction with other disorders of mood and affect. In the present study, perhaps most compelling are the data indicating efficacy in participants with chronic and severe PTSD, and the associated comorbidities including childhood trauma, depression, suicidality, history of alcohol and substance use disorders, and dissociation, because these groups are all typically considered treatment resistant^{2–6}. Given that more than 80% of those assigned a PTSD diagnosis have at least one comorbid disorder³, the identification of a therapy that is effective in those with complicated PTSD and dual diagnoses could greatly improve PTSD treatment. Additional studies should therefore be conducted to evaluate the safety and efficacy of MDMA-assisted therapy for PTSD in those with specific comorbidities.

Although recent research suggests that dissociative subtype PTSD is difficult to treat³⁶, participants with the dissociative subtype who received MDMA-assisted therapy had significant symptom reduction that was at least similar to that of their counterparts with non-dissociative PTSD. Given that this covariate was significant, it warrants further study. Furthermore, given that other treatments for PTSD are not consistently effective for those with the dissociative subtype, these data, if replicated, would indicate an important novel therapeutic niche for MDMA-assisted therapy for typically hard-to-treat populations.

Importantly, there were no major safety issues reported in the MDMA arm of this study. Although abuse potential, cardiovascular risk and suicidality were recorded as AESIs, MDMA was not shown to induce or potentiate any of these conditions. In addition, although there was often a transient increase in blood pressure during MDMA sessions, this was expected based on phase 2 data and previous studies in healthy volunteers³⁷. These data suggest that MDMA has an equivalent, if not better, safety profile compared with that of first-line SSRIs for the treatment of PTSD, which are known to carry a low risk of QT interval prolongation³⁸.

There are several limitations to the current trial. First, due to the coronavirus disease 2019 (COVID-19) pandemic, the participant population is smaller than originally planned. However, given the power noted in this study, it is unlikely that population size was an impediment. Second, the population is relatively homogeneous and lacks racial and ethnic diversity, which should be addressed in future trials. Third, this report describes the findings of a short-term pre-specified primary outcome, 2 months after the last experimental session and 5 weeks since the final integrative therapy session; long-term follow-up data from this controlled trial will be collected to assess durability of treatment. Fourth, safety data were by

necessity collected by site therapists, perhaps limiting the blinding of the data. To eliminate this effect on the primary and secondary outcome measures, all efficacy data were collected by blinded, independent raters. Last, given the subjective effects of MDMA, the blinding of participants was also challenging and possibly led to expectation effects¹⁴. However, although blinding was not formally assessed during the study, when participants were contacted to be informed of their treatment assignment at the time of study unblinding it became apparent that at least 10% had inaccurately guessed their treatment arm. Although anecdotal, at least 7 of 44 participants in the placebo group (15.9%) inaccurately believed that they had received MDMA, and at least 2 of 46 participants in the MDMA group (4.3%) inaccurately believed that they had received placebo.

We may soon be confronted with the potentially enormous economic and social repercussions of PTSD, exacerbated by the COVID-19 pandemic. Overwhelmingly high rates of psychological and mental health impairment could be with us for years to come and are likely to impart a considerable emotional and economic burden. Novel PTSD therapeutics are desperately needed, especially for those for whom comorbidities confer treatment resistance.

In summary, MDMA-assisted therapy induces rapid onset of treatment efficacy, even in those with severe PTSD, and in those with associated comorbidities including dissociative PTSD, depression, history of alcohol and substance use disorders, and childhood trauma. Not only is MDMA-assisted therapy efficacious in individuals with severe PTSD, but it may also provide improved patient safety. Compared with current first-line pharmacological and behavioral therapies, MDMA-assisted therapy has the potential to dramatically transform treatment for PTSD and should be expeditiously evaluated for clinical use.

Online content

Any methods, additional references, Nature Research reporting summaries, source data, extended data, supplementary information, acknowledgements, peer review information; details of author contributions and competing interests; and statements of data and code availability are available at <https://doi.org/10.1038/s41591-021-01336-3>.

Received: 5 February 2021; Accepted: 2 April 2021;

Published online: 10 May 2021

References

1. Yehuda, R. et al. Putative biological mechanisms for the association between early life adversity and the subsequent development of PTSD. *Psychopharmacology (Berl.)* **212**, 405–417 (2010).
2. Widom, C. S. Posttraumatic stress disorder in abused and neglected children grown up. *Am. J. Psychiatry* **156**, 1223–1229 (1999).
3. Kessler, R. C., Sonnega, A., Bromet, E., Hughes, M. & Nelson, C. B. Posttraumatic stress disorder in the National Comorbidity Survey. *Arch. Gen. Psychiatry* **52**, 1048–1060 (1995).
4. Hegel, M. T. et al. Impact of comorbid panic and posttraumatic stress disorder on outcomes of collaborative care for late-life depression in primary care. *Am. J. Geriatr. Psychiatry* **13**, 48–58 (2005).
5. Tarrier, N., Taylor, K. & Gooding, P. Cognitive-behavioral interventions to reduce suicide behavior: a systematic review and meta-analysis. *Behav. Modif.* **32**, 77–108 (2008).
6. Wolf, E. J., Lunney, C. A. & Schnurr, P. P. The influence of the dissociative subtype of posttraumatic stress disorder on treatment efficacy in female veterans and active duty service members. *J. Consult. Clin. Psychol.* **84**, 95–100 (2016). Jan.
7. Steenkamp, M. M., Litz, B. T., Hoge, C. W. & Marmar, C. R. Psychotherapy for military-related PTSD: a review of randomized clinical trials. *JAMA* **314**, 489–500 (2015).
8. Watkins, L. E., Sprang, K. R. & Rothbaum, B. O. Treating PTSD: a review of evidence-based psychotherapy interventions. *Front. Behav. Neurosci.* **12**, 258 (2018).
9. Bisson, J. I., Roberts, N. P., Andrew, M., Cooper, R. & Lewis, C. Psychological therapies for chronic post-traumatic stress disorder (PTSD) in adults. *Cochrane Database Syst. Rev.* **2013**(12), CD003388 (2013).

10. Gutner, C. A., Gallagher, M. W., Baker, A. S., Sloan, D. M. & Resick, P. A. Time course of treatment dropout in cognitive-behavioral therapies for posttraumatic stress disorder. *Psychol. Trauma* **8**, 115–121 (2016).
11. Marseille, E., Kahn, J. G., Yazar-Klosinski, B. & Doblin, R. The cost-effectiveness of MDMA-assisted psychotherapy for the treatment of chronic, treatment-resistant PTSD. *PLoS ONE* **15**, e0239997 (2020).
12. Rudnick, G. & Wall, S. C. The molecular mechanism of “ecstasy” [3,4-methylenedioxy-methamphetamine(MDMA)]: serotonin transporters are targets for MDMA-induced serotonin release. *Proc. Natl Acad. Sci. USA* **89**, 1817–1821 (1992).
13. Hake, H. S. et al. 3,4-Methylenedioxymethamphetamine (MDMA) impairs the extinction and reconsolidation of fear memory in rats. *Physiol. Behav.* **199**, 343–350 (2019).
14. Nardou, R. et al. Oxytocin-dependent reopening of a social reward learning critical period with MDMA. *Nature* **569**, 116–120 (2019).
15. Mithoefer, M. C. et al. MDMA-assisted psychotherapy for treatment of PTSD: study design and rationale for phase 3 trials based on pooled analysis of six phase 2 randomized controlled trials. *Psychopharmacology (Berl.)* **236**, 2735–2745 (2019).
16. Feduccia, A. A. et al. Breakthrough for trauma treatment: safety and efficacy of MDMA-assisted psychotherapy compared to paroxetine and sertraline. *Front. Psychiatry* **10**, 650 (2019).
17. Lee, D. J. et al. Psychotherapy versus pharmacotherapy for posttraumatic stress disorder: systematic review and meta-analyses to determine first-line treatments. *Depress. Anxiety* **33**, 792–806 (2016).
18. Feduccia, A. A., Jerome, L., Mithoefer, M. C. & Holland, J. Discontinuation of medications classified as reuptake inhibitors affects treatment response of MDMA-assisted psychotherapy. *Psychopharmacology (Berl.)* **238**, 581–588 (2021).
19. Bauer, E. P. Serotonin in fear conditioning processes. *Behav. Brain Res.* **277**, 68–77 (2015).
20. Johnson, P. L. et al. Assessment of fear and anxiety associated behaviors, physiology and neural circuits in rats with reduced serotonin transporter (SERT) levels. *Transl. Psychiatry* **9**, 33 (2019).
21. Lee, H. J. et al. Influence of the serotonin transporter promoter gene polymorphism on susceptibility to posttraumatic stress disorder. *Depress. Anxiety* **21**, 135–139 (2005).
22. Lesch, K. P. et al. Association of anxiety-related traits with a polymorphism in the serotonin transporter gene regulatory region. *Science* **274**, 1527–1531 (1996).
23. Hariri, A. R. et al. Serotonin transporter genetic variation and the response of the human amygdala. *Science* **297**, 400–403 (2002).
24. Kawahara, H., Yoshida, M., Yokoo, H., Nishi, M. & Tanaka, M. Psychological stress increases serotonin release in the rat amygdala and prefrontal cortex assessed by in vivo microdialysis. *Neurosci. Lett.* **162**, 81–84 (1993).
25. Bedi, G., Phan, K. L., Angstadt, M. & de Wit, H. Effects of MDMA on sociability and neural response to social threat and social reward. *Psychopharmacology (Berl.)* **207**, 73–83 (2009).
26. Frewen, P. A. & Lanius, R. A. Toward a psychobiology of posttraumatic self-dysregulation: reexperiencing, hyperarousal, dissociation, and emotional numbing. *Ann. NY Acad. Sci.* **1071**, 110–124 (2006).
27. Kamboj, S. K. et al. Recreational 3,4-methylenedioxy-N-methylamphetamine (MDMA) or ‘ecstasy’ and self-focused compassion: preliminary steps in the development of a therapeutic psychopharmacology of contemplative practices. *J. Psychopharmacol.* **29**, 961–970 (2015).
28. Dewey, D., Schuldberg, D. & Madathil, R. Do peritraumatic emotions differentially predict PTSD symptom clusters? Initial evidence for emotion specificity. *Psychol. Rep.* **115**, 1–12 (2014).
29. Hysek, C. M. et al. MDMA enhances emotional empathy and prosocial behavior. *Soc. Cogn. Affect. Neurosci.* **9**, 1645–1652 (2014).
30. Keller, S. M., Zoellner, L. A. & Feeny, N. C. Understanding factors associated with early therapeutic alliance in PTSD treatment: adherence, childhood sexual abuse history, and social support. *J. Consult. Clin. Psychol.* **78**, 974–979 (2010).
31. Imel, Z. E., Laska, K., Jakupcak, M. & Simpson, T. L. Meta-analysis of dropout in treatments for posttraumatic stress disorder. *J. Consult. Clin. Psychol.* **81**, 394–404 (2013).
32. Mithoefer M. MDMA-assisted psychotherapy; promising treatment for PTSD. American Psychiatric Association Annual Meeting, Toronto, Ontario, Canada (2015).
33. Fortenbaugh, F. C. et al. The impact of common psychiatric and behavioral comorbidities on functional disability across time and individuals in post-9/11 veterans. *J. Trauma. Stress* **33**, 750–761 (2020).
34. Bureau of Labor and Statistics. Employment Situation of Veterans—2020. News release, 18 March 2021; <https://www.bls.gov/news.release/pdf/vet.pdf>
35. Congressional Budget Office. Possible Higher Spending Paths for Veterans’ Benefits (2018); <https://www.cbo.gov/publication/54881>
36. Cloitre, M., Petkova, E., Wang, J. & Lu Lassell, F. An examination of the influence of a sequential treatment on the course and impact of dissociation among women with PTSD related to childhood abuse. *Depress. Anxiety* **29**, 709–717 (2012).
37. Vizeli, P. & Liechti, M. E. Safety pharmacology of acute MDMA administration in healthy subjects. *J. Psychopharmacol.* **31**, 576–588 (2017).
38. Funk, K. A. & Bostwick, J. R. A comparison of the risk of QT prolongation among SSRIs. *Ann. Pharmacother.* **47**, 1330–1341 (2013).

Publisher’s note Springer Nature remains neutral with regard to jurisdictional claims in published maps and institutional affiliations.



Open Access This article is licensed under a Creative Commons Attribution 4.0 International License, which permits use, sharing, adaptation, distribution and reproduction in any medium or format, as long as you give appropriate credit to the original author(s) and the source, provide a link to the Creative Commons license, and indicate if changes were made. The images or other third party material in this article are included in the article’s Creative Commons license, unless indicated otherwise in a credit line to the material. If material is not included in the article’s Creative Commons license and your intended use is not permitted by statutory regulation or exceeds the permitted use, you will need to obtain permission directly from the copyright holder. To view a copy of this license, visit <http://creativecommons.org/licenses/by/4.0/>.

This is a U.S. government work and not under copyright protection in the U.S.; foreign copyright protection may apply 2021

Methods

Study design. This was a randomized double-blind study designed to compare the efficacy of MDMA-assisted therapy with that of placebo with therapy. Fifteen study sites, consisting of 11 in the United States, two in Canada and two in Israel, included both institutional sites and private clinics. Ethics approval was obtained from Copernicus Group Independent Review Board, Western Institutional Review Board, University of British Columbia Providence Healthcare Research Ethics Board, and the Helsinki Committees of Be'er Yaakov Ness Ziona Mental Health Center and Chaim Sheba Medical Center. This clinical study was conducted in accordance with the principles of the Declaration of Helsinki. The public study protocol is available at <http://maps.org/mapp1>. The therapist manual is available at <http://maps.org/treatment-manual>.

Participants. Participants were recruited through print and internet advertisements, referrals from treatment providers, and by word of mouth. Participants were required to initiate contact with the study sites themselves, even if recommended by a provider. After providing written informed consent, participants were screened for eligibility. The criteria for inclusion consisted of meeting the *Diagnostic and Statistical Manual of Mental Disorders*, fifth edition (DSM-5) criteria for current PTSD with a symptom duration of ≥ 6 months at screening (as assessed with the Mini International Neuropsychiatric Interview (MINI) for DSM-5), and a CAPS-5 total severity score of ≥ 35 at baseline. Exclusion criteria consisted of primary psychotic disorder, bipolar I disorder, dissociative identity disorder, eating disorders with active purging, major depressive disorder with psychotic features, personality disorders, current alcohol and substance use disorders, pregnancy or lactation, and any medical condition that could make receiving a sympathomimetic drug harmful due to increased blood pressure and heart rate, including uncontrolled hypertension, history of arrhythmia, or marked baseline prolongation of QT and/or QTc interval. Participants with other mild, stable, chronic medical problems (for example, type 2 diabetes mellitus or well-controlled hypertension) were eligible for enrollment if the site physician, clinical investigator and medical monitor agreed that the condition would not increase the risk associated with MDMA administration. Participants were required to comply with lifestyle modifications, including a medically supervised discontinuation of psychiatric medications for a minimum of five half-lives plus one additional week before the baseline assessments (see the study protocol for inclusion and exclusion criteria).

The study protocol was amended on three occasions during study enrollment: first, to add clarity to eligibility criteria related to comorbid medical conditions; second, to add terms of suicidal ideation and behavior as AESIs, as requested by the FDA; and third, to increase the frequency of suicidality assessments following experimental sessions, as requested by the FDA, and to add an option for some telemedicine visits following the COVID-19 pandemic. Given that the study was at full enrollment ($n = 105$) when COVID-19 shut down in-person interactions at most of the study sites, the FDA and sponsor concluded that a reduced sample size of 90 participants, instead of the planned 100, would maintain sufficient statistical power to meet study objectives and would avoid COVID-19 delays of experimental sessions, which might confound the assessment of treatment effects.

Study drug. The study drug was manufactured in accordance with Current Good Manufacturing Practice (CGMP) standards by Onyx Scientific and compounded by Sharp Clinical Services. Assays for chemistry, manufacturing and controls were completed in accordance with the CGMP and International Council for Harmonisation of Technical Requirements for Pharmaceuticals for Human Use (ICH) standards, and reported to the FDA, Health Canada and the Israel Ministry of Health.

Randomization, masking and bias minimization. Participants were randomized in a blinded fashion and were allocated 1:1 to either the MDMA-assisted therapy group or the placebo with therapy group. Randomization was stratified by site and occurred following enrollment confirmation (after preparatory visits). Randomization was managed via an interactive web randomization system—ITClinical IWRS, version 11.0.1 (ITClinical, LDA)—based on a centralized randomization schedule developed by an independent third-party vendor to maintain blinding. Participants, site staff and the sponsor were blinded to participant group assignment until after the database was locked.

An inactive placebo with therapy was utilized as the comparator to isolate the efficacy of the MDMA itself. Although low-dose MDMA improved blinding in phase 2 studies, it led to decreased effectiveness compared with an inactive placebo in a PTSD population, making it easier to detect a difference between the active and comparator groups¹⁵. The use of inactive placebo also allows for uncontaminated comparison of safety data between groups. Therefore, an inactive placebo was determined in partnership with the FDA as a more conservative statistical comparison, and the study utilized observer-blinded efficacy assessments to minimize bias in efficacy measurements.

An observer-blind and centralized independent rater pool was used to administer the primary and secondary outcome measures, that is, the CAPS-5 and the SDS for functional impairment, the latter of which was adapted to limit missing item-level data as per the FDA requirements and included use of the

three-item mean as the total score and imputation of work-related impairment as the maximum score, if caused by PTSD. The independent rater measurements were conducted at baseline and following each experimental session via live video interviews. Independent raters did not repeatedly see the same participant and the independent rater pool was blinded to the complete study design, visit number, treatment assignment, and all data collected by the therapy team after baseline, with the exception of safety data related to suicidality. Participants were instructed to withhold their opinion on treatment group assignment from independent raters and to refrain from sharing details regarding the study design and their number of completed visits. To ensure that all site and sponsor staff were shielded from study outcome measures, primary and secondary outcome measures were collected from the blinded independent rater pool and stored in a dedicated database that was separate from the blinded, clinical database.

Procedures. Following an initial phone screening, participants provided written informed consent and underwent further screening assessments for eligibility. These included the PTSD Checklist for DSM-5 (PCL-5), the MINI for DSM-5, the Structured Clinical Interview for DSM-5 Screening Personality Questionnaire and Structured Clinical Interview for DSM-5 Personality Disorders (SCID-5-SPQ and -PD), the Lifetime C-SSRS, medical history, and pre-study medications. Study staff contacted outside providers, ordered medical records, and conducted a physical examination, laboratory testing (including pregnancy and drug tests), electrocardiogram, and 1-min rhythm strip. Eligible participants were enrolled in the study and began psychiatric medication taper (Table 1) if needed, and collection of adverse events. Anticipated effects of MDMA, such as euphoria, stimulation and feelings of closeness³⁹, were intentionally not solicited as adverse events to avoid biasing the collection of adverse event data. Participant medication taper was variable, lasting from 0 d (no taper needed) to 103 d. Clinical data were electronically captured using Medrio EDC versions R40–R40.7.

In accordance with FDA guidance, we paid special attention to a subset of adverse events, termed AESIs, relating to cardiac function that could be indicative of QT interval prolongation or cardiac arrhythmias, abuse liability, and suicidal ideation and behavior. All adverse events that included signs or symptoms potentially associated with a cardiovascular event such as palpitations or dizziness were further evaluated for reporting as a cardiovascular adverse event. To assess signs of MDMA abuse potential, any adverse event terms such as 'behavioral addiction', 'drug abuser', 'substance abuser', 'dependence', 'intentional product misuse', 'overdose' (accidental, intentional or prescribed) or 'drug diversion' were collected and coded as AESIs. Suicidal ideation that was judged as serious or severe by the investigator, serious ideation defined as a C-SSRS suicidal ideation score of a 4 or 5, self-harm in the context of any suicidal ideation, and any suicide attempts were reported as AESIs.

Enrolled participants underwent three 90-min preparatory sessions of therapy with a two-person therapist team in preparation for experimental sessions (Fig. 1). The preparatory sessions focused on establishing therapeutic alliance and trust, and also provided guidance on how to respond to the memories and feelings that could arise during treatment. Participants who failed to meet all eligibility criteria were withdrawn during this preparatory period. Baseline CAPS-5 assessment (to confirm PTSD diagnosis and total severity score of ≥ 35 for randomization) was performed by the independent rater pool after completion of two preparatory sessions and any necessary psychiatric medication taper to establish baseline symptom severity following removal of psychiatric medications. At the end of the preparatory period, participants were assessed for final eligibility and enrollment was confirmed prior to randomization (Fig. 1).

The treatment period consisted of three 8-h experimental sessions of either MDMA-assisted therapy or therapy with inactive placebo control, spaced ~4 weeks apart. Following a 10-h fast, experimental sessions began with a qualitative urine drug screen, pregnancy screen if applicable, and C-SSRS, as well as measurement of baseline blood pressure, body temperature and heart rate immediately before the initial drug dose. Any positive findings on the urine drug screen that could not be attributed to pre-approved concomitant medications were reviewed by the medical monitor to assess compliance with ongoing eligibility criteria and for possible AESIs. Experimental sessions were conducted following a circadian rhythm-adjusted dosing schedule for a morning (~10:00 hours) initial dose.

In each experimental session the participants received a single divided dose of 80–180 mg MDMA or placebo. In the first experimental session, an initial dose of 80 mg was followed by a supplemental half-dose of 40 mg 1.5–2.5 h after the first dose. In the second and third experimental sessions, an initial dose of 120 mg was followed by a supplemental half-dose of 60 mg. If tolerability issues emerged with the initial dose or if participants declined, the protocol permitted the supplemental dose and/or dose escalation to be withheld. There were no instances in which the supplemental dose was withheld due to tolerability issues. Six participants chose either not to take the supplemental dose ($n = 3$, 1 MDMA) or not to escalate to the 120 mg dose ($n = 3$, 2 MDMA) in a total of six experimental sessions (2.3% of the total sessions across the study). Blood pressure, body temperature and heart rate were measured before the supplemental dose was given¹⁴.

Manualized therapy was conducted in accordance with the MDMA-assisted therapy treatment manual (<http://maps.org/treatment-manual>). Therapy was inner-directed and designed to invite inquiry and to facilitate therapeutic effect

by providing support for approaching difficult material in a manner that would not interfere with the participant's spontaneous experience. Every therapist held a Master's degree or above, and the protocol requirement was that one person per therapy team was licensed to provide psychotherapy in accordance with state and local requirements. Therapists were additionally required to take part in the sponsor's five-part training process, which consisted of an online course (15 h), a training course (5 d), experiential learning (3 d), role playing (1 d), and supervision (52 h).

Blood pressure, body temperature and heart rate were measured at the end of each experimental session prior to discharging the participant.

Each experimental session was followed by three 90-min integration sessions that were spaced ~1 week apart to allow the participant to understand and incorporate their experience. The first integration session always occurred on the morning after the experimental session, and the remaining two integration sessions occurred over the following 3–4 weeks (Fig. 1).

Independent raters conducted CAPS-5 and SDS assessments ~3 weeks after each of the first two experimental sessions. The primary outcome assessment was conducted ~8 weeks after the third experimental session (18 weeks after the baseline assessment), in which the independent raters collected the final CAPS-5 and SDS assessments. Twenty per cent of independent rater assessments were randomly selected and reviewed for fidelity. Lead independent raters evaluated the fidelity of all assessments related to enrollment failures as well as an additional 20% of remaining baseline CAPS-5 assessments. Diagnostic concordance between the raters had a Cohen's kappa coefficient of 0.94, and reliability analysis of the CAPS-5 total severity scores showed a Spearman correlation coefficient of 0.98 ($P < 0.0001$), demonstrating high inter-rater reliability between the independent raters. The independent raters were all mental health professionals with graduate-level training in psychology, social work or counseling, at least 1 year of experience working with trauma-exposed populations, and had previous experience administering structured assessments.

Cases of non-compliance, protocol deviations, loss to follow-up, and other reasons for participant dropout were assessed for the presence of AEs. There were two major protocol deviations (defined as the eligibility criteria not being met by the randomized participants during the course of the study). In the first protocol deviation a participant was not compliant with drug use lifestyle modifications on study, and in the second protocol deviation a participant disclosed cannabis use at study entry but abstained for the duration of the study. There was one dosing error in which a participant in the placebo group received 80 mg placebo as an initial dose and 100 mg as a supplemental dose ($n = 1$). Additionally, 14 participants (10 of whom were in the MDMA arm) requested further integrative visits, as permitted by the protocol.

Objectives. The primary objective of this trial was to evaluate the efficacy and safety of MDMA-assisted therapy for PTSD compared with placebo with therapy, based on comparison of CAPS-5 total severity score at baseline with that at 18 weeks after baseline. The CAPS-5 is a semi-structured interview that assesses the index history of DSM-5-defined traumatic event exposure, including the most distressing event, to produce a diagnostic score (presence versus absence) and a PTSD total severity score. The CAPS-5 rates intrusion symptoms (intrusive thoughts or memories), avoidance, cognitive and mood symptoms, arousal and reactivity symptoms, duration and degree of distress, and dissociation. The CAPS-5 is scored on a scale from 0 to 80, with moderate PTSD defined from a rationally derived severity range of 23–34 (ref. ⁴⁰), and severe PTSD as ≥ 35 .

The secondary objective of this trial was to evaluate the efficacy of MDMA-assisted therapy for PTSD compared with placebo with therapy in clinician-rated functional impairment, as measured by the mean change in SDS total scores from baseline to 18 weeks after baseline. Exploratory outcome measures included the BDI-II, the Alcohol Use Disorders Identification Test (AUDIT), the Drug Use Disorders Identification Test (DUDIT) and the Adverse Childhood Experiences (ACE) Questionnaire.

Follow-up. Participants agreed to be recontacted for potential enrollment in a long-term follow-up study, which will include follow-up measures to assess the durability of the treatment. These data will be published at a later date.

Statistics and reproducibility. Statistical power calculations for the initial sample size were made by fitting an MMRM of CAPS-4 data (converted to the CAPS-5 scale and pooled from the phase 2 studies) to obtain variance and covariance parameter estimates. Using the estimated effect size and variance and covariance parameters, the sample size was calculated to achieve a power of 90% at an alpha of 0.049.

The intent-to-treat (ITT) set consisted of 91 randomized participants, however, one participant declined dosing on the morning of the session and provided no additional data, and therefore it was not possible to complete this analysis. Participants were randomized in a blinded fashion with 1:1 allocation as described in the section on randomization, masking and bias minimization above. The modified intent-to-treat (mITT) set consisted of 90 randomized participants who had completed at least one blinded experimental session and at least one post-treatment assessment. The mITT set consisted of 46 participants randomized

to the MDMA group and 44 participants randomized to the placebo group, with identical therapy. The per protocol set (completers) consisted of all participants who completed three experimental sessions and assessments (MDMA, $n = 42$; placebo, $n = 37$) (Fig. 1).

The SAP was guided by the ICH E9 (R1) guidelines, which describe the use of estimands and sensitivity analyses to measure the effects of the drug if taken as directed (de jure, assessment of efficacy), and the effects of the drug if taken as assigned, regardless of adherence (de facto, assessment of effectiveness). The SAP was developed in accordance with FDA requirements and was approved by the European Medicines Agency to meet the requirements for future marketing applications. The primary and secondary efficacy analyses therefore utilized a de jure estimand of the mITT set for assessing treatment efficacy from the CAPS-5 and SDS data while on the study drug. The de jure dataset did not include outcome measurements taken after treatment discontinuation in the analysis of treatment efficacy. Missing data were not imputed.

One participant in the placebo group completed only the baseline assessment, and discontinued intervention but provided CAPS data at the T4 timepoint, ~18 weeks after baseline. Given that no endpoint assessment was collected prior to treatment discontinuation, this participant is excluded from the de jure estimand (leaving $n = 89$) but is included in the de facto estimand sensitivity analysis (for a total of $n = 90$). Two additional CAPS data points at the T4 timepoint, ~18 weeks after baseline, from two participants in the placebo group who provided these data following discontinuation of treatment, were not included in the de jure estimand (Supplementary Table 1).

The de facto estimand assessed the impact of these missing data points in the mITT set. That is, the CAPS measures at the T4 timepoint, ~18 weeks after baseline for the three placebo participants who discontinued treatment but provided off-treatment outcome assessments were included in a sensitivity analysis, which determined that inclusion of these measures in the model did not significantly alter the results.

The primary and secondary efficacy analyses were carried out using an MMRM that included all outcome data from baseline and the first, second and third experimental sessions. The efficacy of treatment was tested by comparing the change from baseline to the third experimental session in CAPS-5 and SDS scores between treatment groups in two-sided tests. The fixed effects were treatment (MDMA or placebo), baseline CAPS score, dissociative subtype and investigational site, with random effect specified as study participant.

A hierarchical testing strategy was used to control for type I error, such that the hypothesis for the key secondary endpoint (SDS) would be tested only if the statistical test for the primary efficacy comparison rejected the null hypothesis. An analysis of covariance (ANCOVA) to test the effects of study participation before versus after the COVID-19 pandemic declaration by the World Health Organization indicated a non-significant interaction and therefore was not included in the primary outcome model (Supplementary Table 2). The primary outcome analysis was replicated independently by one blinded programmer and one unblinded programmer.

An independent data monitoring committee monitored adverse events for safety and conducted one administrative interim analysis, after completion of enrollment and of 60% of primary endpoints to examine the adequacy of the sample size. The data monitoring committee recommended that no additional participants should be added, based on conditional power calculations supporting 90% statistical power, but in keeping with the SAP did not provide the sponsor with any information on the conditional power or effect size. The alpha level was set to 0.05, and 2% of the alpha (0.001) was spent on the interim analysis and 98% (0.0499) was left for the final analysis.

Statistics for the primary and secondary efficacy comparisons (CAPS and SDS) are reported as P values from the results of the MMRM analysis. In exploratory analyses, additional baseline covariates of age, gender, ethnicity, prior use of SSRIs, depression as measured by the BDI-II, adverse childhood experiences, and alcohol and substance use disorders were assessed in the model, with the threshold of significance set at $P < 0.05$ (Supplementary Table 1). BDI-II score was also assessed as an exploratory efficacy outcome measure with a paired, two-tailed t -test. Results are reported as mean (s.d.) throughout the text. Between-group effect size was calculated with Cohen's d , and 95% CIs are reported. SAS version 9.4 (SAS Institute) was used for analyses.

The safety analysis included all participants who were given at least one dose of the study drug or placebo. The primary safety analysis evaluated TEAEs as a participant-level analysis. An association with MDMA was determined based on the relative incidence of TEAEs with at least a twofold difference between the MDMA and placebo groups.

Reporting Summary. Further information on research design is available in the Nature Research Reporting Summary linked to this article.

Data availability

The data that support the findings of this study are available from the sponsor (MAPS). However, restrictions apply to the availability of these data, which were used under license for the current study, and so are not publicly available. Data are, however, available from the authors upon reasonable request and with the

permission of MAPS at <http://maps.org/datause>. All requests for raw and analyzed data are promptly reviewed by the sponsor delegate and trial organizer, MAPS PBC, to verify if the request is subject to any confidentiality obligations. Patient-related data not included in the paper were generated as part of clinical trials and may be subject to patient confidentiality. Any data that can be shared will be released via a data use agreement.

Code availability

Commercially available software (SAS version 9.4, SAS Institute) was used for analyses, in keeping with the SAP.

References

39. Bershad, A. K., Miller, M. A., Baggott, M. J. & de Wit, H. The effects of MDMA on socio-emotional processing: does MDMA differ from other stimulants? *J. Psychopharmacol.* **30**, 1248–1258 (2016).
40. Weathers, F. W. et al. The Clinician-Administered PTSD Scale for DSM-5 (CAPS-5): development and initial psychometric evaluation in military veterans. *Psychol. Assess.* **30**, 383–395 (2018).

Acknowledgements

The authors thank all of the participants who screened for and participated in this challenging research study, and acknowledge the oversight of the principal investigators, T. Nachsoni (Be'er Yaakov, Israel) and N. Puri (University of British Columbia, Canada). The authors thank the study coordinators S. Sadler, K. Brown, C. Marsicano, M. Wimsatt, B. Bendixsen, D. Bissell, S. Serice, M. Gaffigan, C. Miller, R. Bacigalupi, B. Deyo, A. Baltes, T. Baron, L. Owens, S. Robison, D. Gumpel, C. Battistelli, A. Samkavitz, K. Blommaert, A. Menier, D. Katz, E. Pushkarski, N. Somech and M. Bar Haim for their work at their respective study sites. The authors are especially grateful to Charleston study coordinator S. Sadler, who passed away prior to the end of this study after a decade of work on this and several prior Multidisciplinary Association for Psychedelic Studies (MAPS) clinical trials. The authors also acknowledge the following study therapists for their skillful treatment of study participants: S. Braswell, W. Reynolds, C. Reusche, E. Passow, S. Gael Giron, D. May, J. Beachy, K. Cooper, A. Schnaitter, C. Hancock, C. Heacock, B. Balliett, E. Siegal, N. Brüss, V. Kraft, A. Booth, J. McCowan, S. Taylor, M. Skellie, Z. Hippel, M. Alavi, C. Stauffer, D. McDivitt, A. Rosati, K. Peoples, E. Sola, A. Penn, S.E. Sienknecht, G. Herzberg, H. Schwartz, V. Gold, J. Andries, C. Thomas, S. Ross, J. Guss, J.H. Duane, E. Nielson, K. O'Donnell, W. Hall, E. Nielson, P. Lister, E. Horowitz, A. Belser, J. Guss, J. Silverman, S. Walker, J. Hopper, M. Alpert, F. Guerriero, A. St. Goar, E. Call, C. Jackson, J. Simundic, H. Rubensohn, K. Lutz, S. Adams, T. Nachsoni, N. Halberstadt, D. Dogon, K.T. and I. Siemion. The authors thank the site physicians, nurses, research assistants, volunteers, night attendants, physical examiners and all site staff who contributed their time and effort to the study. The authors acknowledge the following select members of the MAPS PBC internal team who organized the study: M. Brown and G. Fortier, for their work in clinical trial management; A. Nary, P. Perl, E. Shainer, A. Pace and S. Ndukwe for careful monitoring of study data; A. Schwind, P. Llorach, M. Leighton, D. Iszak, S. Ramey-Wright and E. Gworek for tireless support of the study administration; S. Garcia-Velazquez for her review of participant safety data; J. Lindgren for coordination of IRB submissions; E. Heimler for dedicated effort in coordinating the independent rater pool; A. Wang, J. Lin and A. Garcia for overseeing the adherence rating and supervision programs; S. Scheld for supporting therapist and supervisor training and the development of the Code of Ethics; J. Poncini, C. Shelley, M. Tromba and A. O'Keefe for developing the technology and procedures to collect and manage session recordings with security and care; H. Clouting, B. Melton and K. Cohn for coordinating drug supply; A. Feduccia for her work on the phase 2 program that paved the way for this phase 3 trial; and C. Hennigan for the creation of the clinical databases. The authors also thank G. More for statistical programming, the teams of independent raters for their attention to detail and care for participants during outcome

assessments, and the adherence raters for their close evaluation of the therapeutic delivery. No compensation was provided beyond normal compensation of employment. This clinical trial was sponsored by MAPS, a 501(c)(3) non-profit organization. MAPS provided the MDMA and fully funded this study from private donations. MAPS Public Benefit Corporation (MAPS PBC), wholly owned by MAPS, was the trial organizer. MAPS PBC provided the study design and the monitoring of study data; analysis, management and interpretation of data; reviewed and approved the paper; and submitted the paper for publication. The funder had no role in the collection of data or in conducting the study.

Author contributions

J.M.M., B.Y.-K., S.H. and A.C. had full access to all of the data in the study and take responsibility for the integrity of the data and for the accuracy of the data analysis. R.D., M.M., B.Y.-K., A.E., R.M., C.H. and A.L. conceived and designed the study. M.O.G., B.P., W.G., S.Q., C.P., I.G., R.W., J.M.M., S.S., G.W., B.V.D.K., C.M., Y.G., S.S.K., E.H., S.A., M.B., R.A., Y.W., C.N., R.B. and K.T. collected the data. S.C., M.M., A.M., M.O.G., B.P., S.K., K.P.-G. and K.T. carried out supervision and training. C.H., R.M., A.L., B.Y.-K., A.E. and A.D.B. carried out sponsor oversight of data collection. J.M.M., A.C. and B.Y.-K. drafted the paper. J.M.M., B.Y.-K., A.D.B., M.B., A.L., C.H., S.K., K.P.-G., A.C., S.H., R.D., J.B.W., B.V.D.K., M.O.G., W.G., C.P., I.G., C.N., M.M., S.C., B.P., G.W., S.S.K., E.H., A.E., J.D.W., S.S., Y.G., S.A., R.W. and C.M. critically revised the paper for important intellectual content. S.H., J.B.W., B.Y.-K., A.C., S.K. and A.D.B. carried out statistical analysis and interpretation of data. R.D. obtained funding.

Competing interests

The authors declare the following financial competing interests: A.E., R.M., C.H., A.D.B., S.C., A.C. and J.B.W. received salary support for full-time employment with MAPS PBC for this study and other work; A.L., B.Y.-K. and R.D. received salary support for full-time employment with MAPS for this study and other work; M.M., A.M., M.O.G., B.P. and K.T. received support as contractors from MAPS PBC for training and supervision of research psychotherapists for this study and other work; S.K., K.P.-G. and S.H. received support as contractors of MAPS PBC for their contributions to this study and other work; and study investigators and researchers, J.M.M., M.B., M.O.G., W.G., C.P., I.G., C.N., B.P., S.Q., G.W., S.S.K., B.V.D.K., K.T., R.A., R.W., S.S., J.D.W., C.M., Y.G., E.H., S.A., Y.W. and R.B., received funding from MAPS PBC during the conduct of the study for this study as well as other studies. The following authors disclose receipt of personal fees or grants from companies in the field, but unrelated to the present work: M.B. (Heffter Research Institute, Turnbull Family Foundation, B. More, Mind Medicine, Fournier Family Foundation, Bill Linton, George Sarlo Foundation, RiverStyx Foundation, Dr. Bronners Family Foundation, and National Institutes of Health), C.P. (Fluence and Mindbloom), J.D.W. (Filament Ventures and Silo Pharmaceuticals), and J.M.M. and A.C. (Usona Institute). The following authors disclose non-financial relationships with organizations in the field: M.M. and A.M. serve on the Scientific Advisory Board for Awaken Life Sciences, C.P. co-founded Nautilus Sanctuary and Nautilus Psychiatric Services, S.S. serves on the advisory board for Maya Health, and I.G. serves on the Scientific Advisory Board of Journey Clinical and co-founded Fluence.

Additional information

Supplementary information The online version contains supplementary material available at <https://doi.org/10.1038/s41591-021-01336-3>.

Correspondence and requests for materials should be addressed to J.M.M.

Peer review information *Nature Medicine* thanks Philip Cowen, Kirsty James and the other, anonymous, reviewer(s) for their contribution to the peer review of this work. Jerome Staal was the primary editor on this article and managed its editorial process and peer review in collaboration with the rest of the editorial team.

Reprints and permissions information is available at www.nature.com/reprints.

Reporting Summary

Nature Research wishes to improve the reproducibility of the work that we publish. This form provides structure and transparency in reporting. For further information on Nature Research policies, see our [Editorial Policies](#) and the [Editorial Policy Checklist](#).

Statistics

For all statistical analyses, confirm that the following items are present in the figure legend, table legend, main text, or Methods section.

- | n/a | Confirmed |
|-------------------------------------|--|
| <input type="checkbox"/> | <input checked="" type="checkbox"/> The exact sample size (n) for each experimental group/condition, given as a discrete number and unit of measurement |
| <input type="checkbox"/> | <input checked="" type="checkbox"/> A statement on whether measurements were taken from distinct samples or whether the same sample was measured repeatedly |
| <input type="checkbox"/> | <input checked="" type="checkbox"/> The statistical test(s) used AND whether they are one- or two-sided
<i>Only common tests should be described solely by name; describe more complex techniques in the Methods section.</i> |
| <input type="checkbox"/> | <input checked="" type="checkbox"/> A description of all covariates tested |
| <input type="checkbox"/> | <input checked="" type="checkbox"/> A description of any assumptions or corrections, such as tests of normality and adjustment for multiple comparisons |
| <input type="checkbox"/> | <input checked="" type="checkbox"/> A full description of the statistical parameters including central tendency (e.g. means) or other basic estimates (e.g. regression coefficient) AND variation (e.g. standard deviation) or associated estimates of uncertainty (e.g. confidence intervals) |
| <input type="checkbox"/> | <input checked="" type="checkbox"/> For null hypothesis testing, the test statistic (e.g. F , t , r) with confidence intervals, effect sizes, degrees of freedom and P value noted
<i>Give P values as exact values whenever suitable.</i> |
| <input checked="" type="checkbox"/> | <input type="checkbox"/> For Bayesian analysis, information on the choice of priors and Markov chain Monte Carlo settings |
| <input checked="" type="checkbox"/> | <input type="checkbox"/> For hierarchical and complex designs, identification of the appropriate level for tests and full reporting of outcomes |
| <input type="checkbox"/> | <input checked="" type="checkbox"/> Estimates of effect sizes (e.g. Cohen's d , Pearson's r), indicating how they were calculated |

Our web collection on [statistics for biologists](#) contains articles on many of the points above.

Software and code

Policy information about [availability of computer code](#)

Data collection	Commercially available software was used for data collection through the study including: electronic data capture (EDC) software (Medrio Version 40.5), and interactive web randomization system (IWRS) software (IT Clinical Version 11.0.1).
Data analysis	Commercially available software (SAS software version 9.4 (SAS Institute Inc., Cary, N.C.)) was used for analyses in keeping with the Statistical Analysis Plan.

For manuscripts utilizing custom algorithms or software that are central to the research but not yet described in published literature, software must be made available to editors and reviewers. We strongly encourage code deposition in a community repository (e.g. GitHub). See the Nature Research [guidelines for submitting code & software](#) for further information.

Data

Policy information about [availability of data](#)

All manuscripts must include a [data availability statement](#). This statement should provide the following information, where applicable:

- Accession codes, unique identifiers, or web links for publicly available datasets
- A list of figures that have associated raw data
- A description of any restrictions on data availability

The data that support the findings of this study are available from the sponsor (MAPS). However, restrictions apply to the availability of these data, which were used under license for the current study, and so are not publicly available. Data are however available from the authors upon reasonable request and with permission of MAPS at maps.org/dataset. All requests for raw and analyzed data are promptly reviewed by the sponsor delegate & trial organizer, MAPS Public Benefit Corporation to verify if the request is subject to any confidentiality obligations. Patient-related data not included in the paper were generated as part of clinical trials and may be subject to patient confidentiality. Any data that can be shared will be released via a Data Use Agreement.

Field-specific reporting

Please select the one below that is the best fit for your research. If you are not sure, read the appropriate sections before making your selection.

☒ Life sciences ☐ Behavioural & social sciences ☐ Ecological, evolutionary & environmental sciences

For a reference copy of the document with all sections, see [nature.com/documents/nr-reporting-summary-flat.pdf](https://www.nature.com/documents/nr-reporting-summary-flat.pdf)

Life sciences study design

All studies must disclose on these points even when the disclosure is negative.

Sample size	Statistical power calculations for the initial sample size were made by fitting a mixed-effect repeated measure model (MMRM) of CAPS-4 data, converted to the CAPS-5 scale, pooled from the Phase 2 studies to obtain variance/covariance parameter estimates. Using the estimated effect size and variance/covariance parameters, the sample size was calculated to achieve a power of 90% at an alpha of 0.049.
Data exclusions	The intent-to-treat (ITT) set included n = 91 randomized participants, however one participant declined dosing on the morning of the session and provided no additional data, and therefore it was not possible to complete this analysis. The modified intent-to-treat (mITT) set included n = 90 randomized participants, defined as those who completed at least one blinded experimental session and at least one post-treatment assessment. The mITT set included a total of n = 46 participants randomized to MDMA and n = 44 to Placebo with identical therapy. The per protocol set (completers) included all participants who completed three experimental sessions and assessments (n = 42 MDMA, n = 37 Placebo). One placebo participant completed only Baseline T1, discontinued intervention but provided T4 CAPS data. As no endpoint assessment was collected prior to treatment discontinuation, this participant is excluded from the de jure estimand (leaving n = 89) but included in the de facto estimand sensitivity analysis (for a total of n = 90). Two additional T4 CAPS data points from placebo participants who provided this data following discontinuation of treatment were not included in the de jure estimand (see Supplementary Table 1).
Replication	This Phase 3 RCT replicates previous findings in a series of previously published controlled Phase 2 trials (Mithoefer 2019).
Randomization	Participants were randomized in a blinded fashion and 1:1 allocation to either the MDMA-assisted therapy group or the placebo with therapy group. Randomization was stratified by site and occurred following enrollment confirmation (after preparatory visits). Randomization was managed via an Interactive Web Randomization System (IWRS) based on a centralized randomization schedule developed by an independent third-party vendor to maintain blinding.
Blinding	Participants, site staff, and the sponsor were blinded to participant group assignment until after the database was locked. An observer-blind and centralized Independent Rater (IR) pool was used to administer the Primary and Secondary Outcome measures.

Reporting for specific materials, systems and methods

We require information from authors about some types of materials, experimental systems and methods used in many studies. Here, indicate whether each material, system or method listed is relevant to your study. If you are not sure if a list item applies to your research, read the appropriate section before selecting a response.

Materials & experimental systems

n/a	Involved in the study
<input checked="" type="checkbox"/>	<input type="checkbox"/> Antibodies
<input checked="" type="checkbox"/>	<input type="checkbox"/> Eukaryotic cell lines
<input checked="" type="checkbox"/>	<input type="checkbox"/> Palaeontology and archaeology
<input checked="" type="checkbox"/>	<input type="checkbox"/> Animals and other organisms
<input type="checkbox"/>	<input checked="" type="checkbox"/> Human research participants
<input type="checkbox"/>	<input checked="" type="checkbox"/> Clinical data
<input checked="" type="checkbox"/>	<input type="checkbox"/> Dual use research of concern

Methods

n/a	Involved in the study
<input checked="" type="checkbox"/>	<input type="checkbox"/> ChIP-seq
<input checked="" type="checkbox"/>	<input type="checkbox"/> Flow cytometry
<input checked="" type="checkbox"/>	<input type="checkbox"/> MRI-based neuroimaging

Human research participants

Policy information about [studies involving human research participants](#)

Population characteristics	Study arms were not significantly different in terms of race, ethnicity, sex, age, dissociative subtype, disability, and CAPS-5 score (see Table 1). The mean duration of PTSD diagnosis was 14.8 (11.6) years and 13.2 (11.4) years in the MDMA and placebo groups, respectively. Of note, six participants in the MDMA group and 13 participants in the placebo group qualified as dissociative subtype per the CAPS-5.
Recruitment	Participants were recruited through print and internet advertisements, referrals from treatment providers, and by word of mouth. Participants were required to initiate contact with the study sites themselves, even if recommended by a provider. Since study participants often self-referred, self-selection bias must be considered. Participants may have been intrigued by the novelty or character of the therapeutic, may have had previous positive recreational experience with the therapeutic, or - since participants all were shouldering severe and sometimes dissociative PTSD - may have been willing to consider a

therapeutic that they may not have been willing to consider under less intractable circumstances. All participants provided written informed consent.

Ethics oversight

Ethics approval was obtained from Copernicus Group Independent Review Board, Western Institutional Review Board, University of British Columbia Providence Healthcare Research Ethics Board, and the Helsinki Committees of Beer Yaakov Ness Ziona Mental Health Center and Chaim Sheba Medical Center.

Note that full information on the approval of the study protocol must also be provided in the manuscript.

Clinical data

Policy information about [clinical studies](#)

All manuscripts should comply with the ICMJE [guidelines for publication of clinical research](#) and a completed [CONSORT checklist](#) must be included with all submissions.

Clinical trial registration

ClinicalTrials.gov NCT03537014

Study protocol

The public study protocol is available at maps.org/mapp1. To protect data integrity and study blind and to minimize bias, specific eligibility criteria and timing of assessments have been redacted from the public protocol.

Data collection

Fifteen study sites across the US (11), Canada (2), and Israel (2) included both institutional sites and private clinics. Participants were recruited from November 07, 2018 through May 26, 2020, with the last participant visit conducted on August 21, 2020. The final database was locked on October 27, 2020.

Outcomes

The Primary Outcome measure, the change in Clinician Administered PTSD Scale (CAPS-5), and the Secondary Outcome measure, the change in the Sheehan Disability Scale (SDS) were assessed by a blinded centralized Independent Rater (IR) pool multiple times throughout the study.

Terms and Conditions

Springer Nature journal content, brought to you courtesy of Springer Nature Customer Service Center GmbH (“Springer Nature”).

Springer Nature supports a reasonable amount of sharing of research papers by authors, subscribers and authorised users (“Users”), for small-scale personal, non-commercial use provided that all copyright, trade and service marks and other proprietary notices are maintained. By accessing, sharing, receiving or otherwise using the Springer Nature journal content you agree to these terms of use (“Terms”). For these purposes, Springer Nature considers academic use (by researchers and students) to be non-commercial.

These Terms are supplementary and will apply in addition to any applicable website terms and conditions, a relevant site licence or a personal subscription. These Terms will prevail over any conflict or ambiguity with regards to the relevant terms, a site licence or a personal subscription (to the extent of the conflict or ambiguity only). For Creative Commons-licensed articles, the terms of the Creative Commons license used will apply.

We collect and use personal data to provide access to the Springer Nature journal content. We may also use these personal data internally within ResearchGate and Springer Nature and as agreed share it, in an anonymised way, for purposes of tracking, analysis and reporting. We will not otherwise disclose your personal data outside the ResearchGate or the Springer Nature group of companies unless we have your permission as detailed in the Privacy Policy.

While Users may use the Springer Nature journal content for small scale, personal non-commercial use, it is important to note that Users may not:

1. use such content for the purpose of providing other users with access on a regular or large scale basis or as a means to circumvent access control;
2. use such content where to do so would be considered a criminal or statutory offence in any jurisdiction, or gives rise to civil liability, or is otherwise unlawful;
3. falsely or misleadingly imply or suggest endorsement, approval, sponsorship, or association unless explicitly agreed to by Springer Nature in writing;
4. use bots or other automated methods to access the content or redirect messages
5. override any security feature or exclusionary protocol; or
6. share the content in order to create substitute for Springer Nature products or services or a systematic database of Springer Nature journal content.

In line with the restriction against commercial use, Springer Nature does not permit the creation of a product or service that creates revenue, royalties, rent or income from our content or its inclusion as part of a paid for service or for other commercial gain. Springer Nature journal content cannot be used for inter-library loans and librarians may not upload Springer Nature journal content on a large scale into their, or any other, institutional repository.

These terms of use are reviewed regularly and may be amended at any time. Springer Nature is not obligated to publish any information or content on this website and may remove it or features or functionality at our sole discretion, at any time with or without notice. Springer Nature may revoke this licence to you at any time and remove access to any copies of the Springer Nature journal content which have been saved.

To the fullest extent permitted by law, Springer Nature makes no warranties, representations or guarantees to Users, either express or implied with respect to the Springer nature journal content and all parties disclaim and waive any implied warranties or warranties imposed by law, including merchantability or fitness for any particular purpose.

Please note that these rights do not automatically extend to content, data or other material published by Springer Nature that may be licensed from third parties.

If you would like to use or distribute our Springer Nature journal content to a wider audience or on a regular basis or in any other manner not expressly permitted by these Terms, please contact Springer Nature at

onlineservice@springernature.com